


**Naming Convention:**

RL-<Size>-<Lead>-<Stroke>-<Motor>-<Interface>

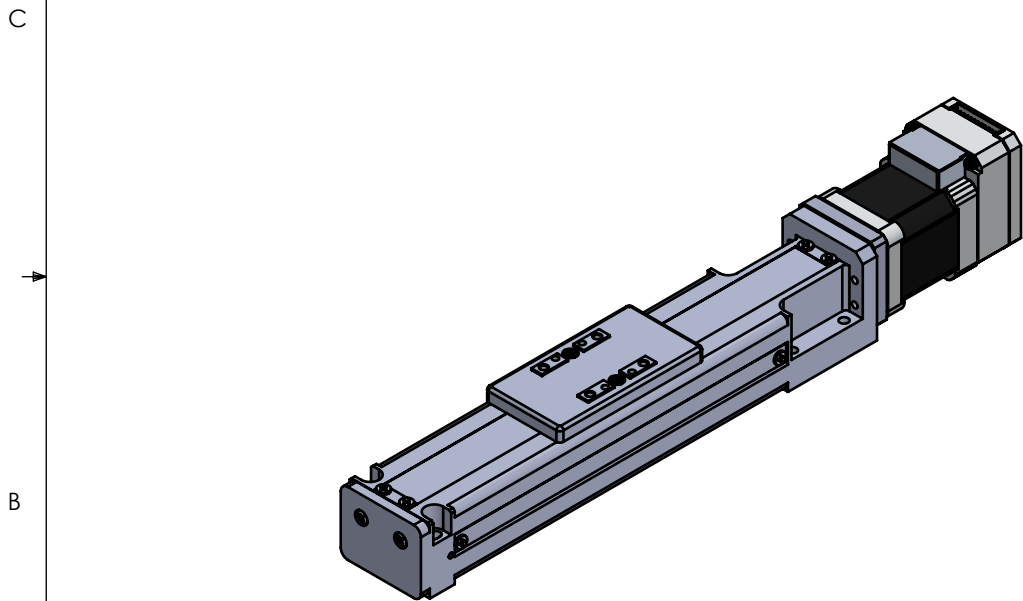
ex.  
RL-45T-06-150-17L30-C

**UNITS: mm [inch]**

	NAME	DATE	DO NOT SCALE DRAWING		DIMENSIONS ARE METRIC	
DRAWN	E.Lock	Jan-27-2015	TITLE:  RL Series Actuator			
CHECKED						
ENG APPR.						
<div> Myostat Motion Control Inc. www.myostat.ca +1 905-836-4441</div>			SIZE	PRT. NO.	REV	
			<b>B</b>	RL-45T-XX-XXX-XXXXXX-X	2.1	
			SCALE: 1:2	WEIGHT: -	SHEET 1 OF 2	

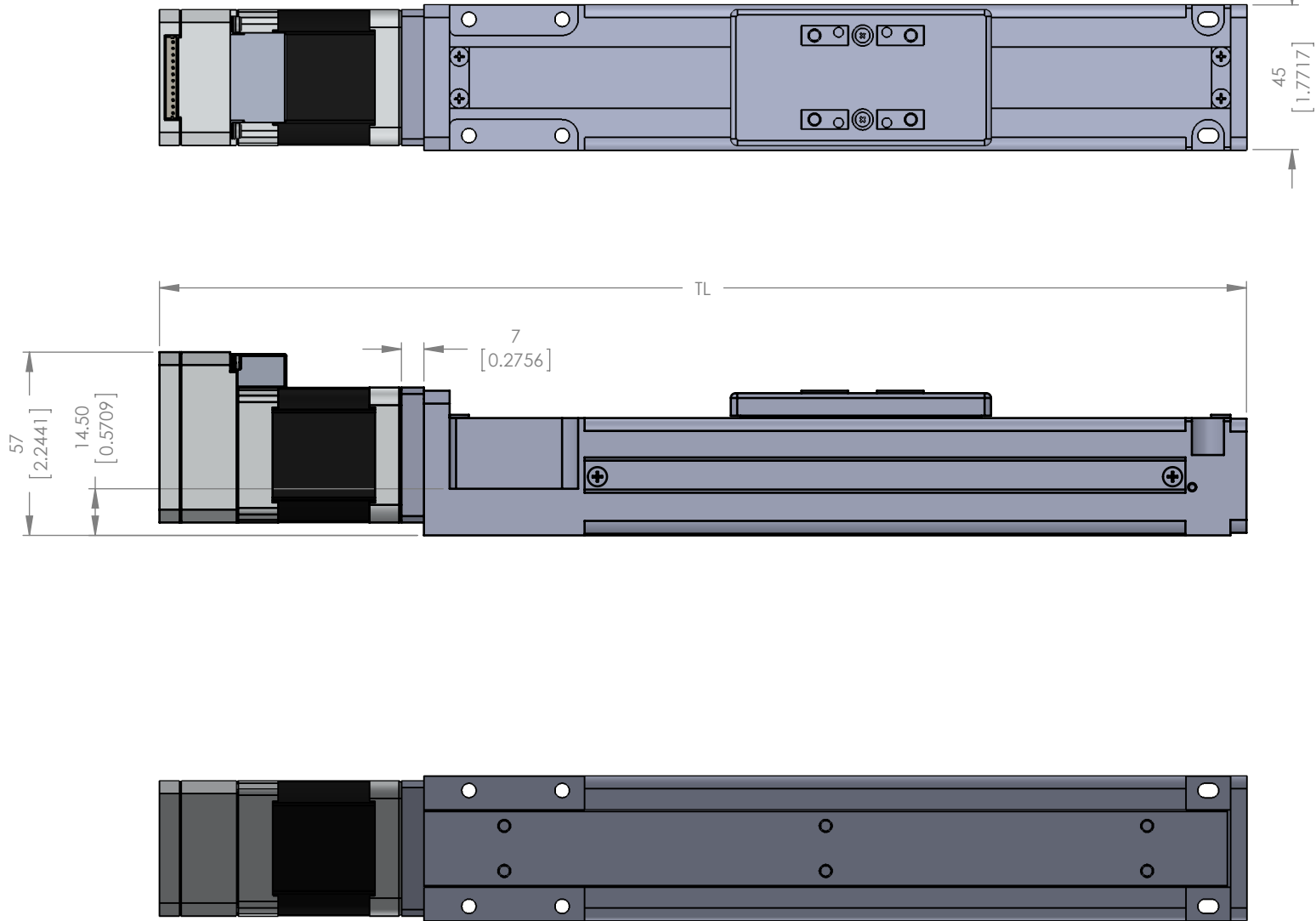
**PROPRIETARY AND CONFIDENTIAL**  
THE INFORMATION CONTAINED IN THIS  
DRAWING IS THE SOLE PROPERTY OF  
MYOSTAT MOTION CONTROL INC.  
ANY REPRODUCTION IN PART OR AS A  
WHOLE WITHOUT THE WRITTEN PERMISSION  
OF COOLMUSCLE INC. IS PROHIBITED.

Technical Data				
			Value	Unit
Repeatability			±0.02	mm
Backlash			0.1	
Ball Screw Shaft Diameter			8	
Ball Screw Lead			12      6	
Rated Speed			600      300	mm/s
Maximum Speed	50 - 400 Stroke	1000	500	
	450 Stroke	840	420	
	500 Stroke	680	340	
Rated Thrust			40      80	N
Maximum Thrust			117      235	
Maximum Acceleration			0.3	G
Horizontal Mass Capacity			5      10	kg
Vertical Mass Capacity			1.5      3	



Stroke	TL - Total Length	
	w/ 17S30C	w/ 17L30C
050	273.5 [10.768]	357 [14.055]
100	323.5 [12.736]	407 [16.024]
150	373.5 [14.705]	457 [17.992]
200	423.5 [16.673]	507 [19.961]
250	473.5 [18.642]	557 [21.929]
300	523.5 [20.610]	607 [23.898]
350	573.5 [22.579]	657 [25.866]
400	623.5 [24.547]	707 [27.835]
450	673.5 [26.516]	757 [29.803]
500	723.5 [28.484]	807 [31.772]

Bill of Materials		
Part No.	Description	Quantity
VLA-ST-45	Actuator	1
ST45-BKT-NEMA17	Bracket	1
17S30C / 17L30C	Motor	1
RCLA16C-5-5	Coupling	1
M3-16mm	Screws	4
M3-8mm	Screws	4



**Naming Convention:**

RL-<Size>-<Lead>-<Stroke>-<Motor>-<Interface>

ex.  
RL-45T-06-150-17L30-C

**UNITS: mm [inch]**

Unless otherwise specified, tolerance to be: CNS 4018 IT 14 Linear measures 0.5-3 ± 0.1 3-6 ± 0.1 6-30 ± 0.2 30-120 ± 0.3 120-315 ± 0.5		NAME	DATE	DO NOT SCALE DRAWING	DIMENSIONS ARE METRIC
DRAWN		E.Lock	Jan-27-2015	TITLE:	
CHECKED				RL Series Actuator	
ENG APPR.					
PROPRIETARY AND CONFIDENTIAL THE INFORMATION CONTAINED IN THIS DRAWING IS THE SOLE PROPERTY OF MYOSTAT MOTION CONTROL INC. ANY REPRODUCTION IN PART OR AS A WHOLE WITHOUT THE WRITTEN PERMISSION OF COOLMUSCLE INC. IS PROHIBITED.		Myostat Motion Control Inc. 1+ 905-836-4441 www.myostat.ca		SIZE <b>B</b>	PRT. NO. RL-45T-XX-XXX-XXXXX-X
				SCALE: 1:2	WEIGHT: -
				SHEET 2 OF 2	