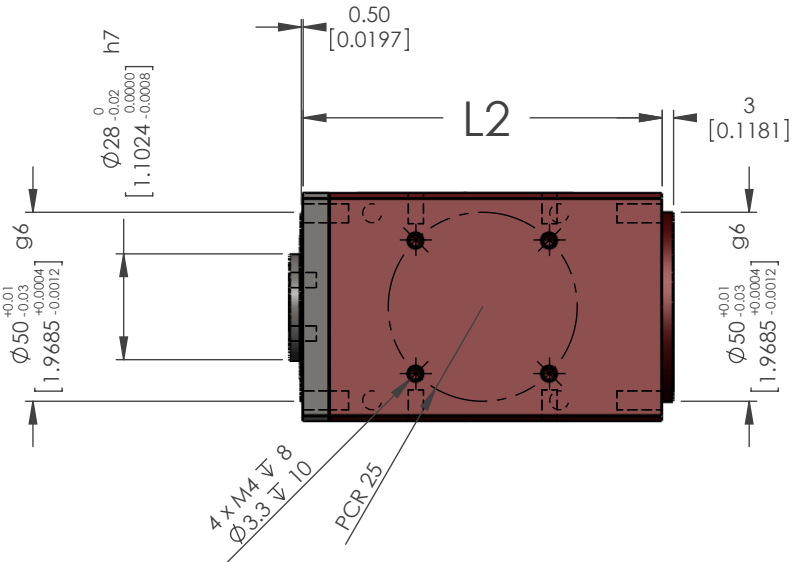
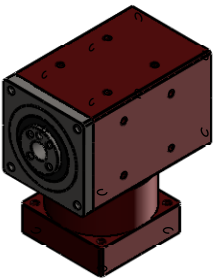


TECHNICAL DATA				
	Units	Ratio	RAFS	RLFS
Available Ratios	-		1,2,3,4,5	2,3,4,5
Nominal Output Torque	Nm	1	25.5	-
		2	24.5	
		3	21.3	
		4	20.4	
		5	18	
Max. Ouput Torque		1 - 5	nominal x2	
Emergency Stop Torque		1 - 5	nominal x2.5	
Nominal Input Speed	RPM	1 - 5	4,000	
Max. Input Speed			6,000	
Input Shaft Moment of Inertia	kg-cm^2	1	0.36	-
		2	0.23	
		3	0.21	
		4	0.21	
		5	0.20	
Max. Axial Load	N	1 - 5	735	625
Max. Radial Load		1 - 5	1470	1250
Torsional Stiffness	Nm/arcmin	1	4.3	-
		2	4.1	
		3	3.6	
		4	3.4	
		5	3.0	
Efficiency at Full Load	%	1 - 5	95≤	
Avg. Service Life	Hrs	1 - 5	20,000	
Weight	Kg	1 - 5	2.1	1.9
Backlash	arcmin	1 - 5	≤6	
Noise Level*	dB	1 - 5	≤70	
Protection Rating	IP rating	1 - 5	64	
Operating Temp.	°Celcius	1 - 5	-20 to 100	

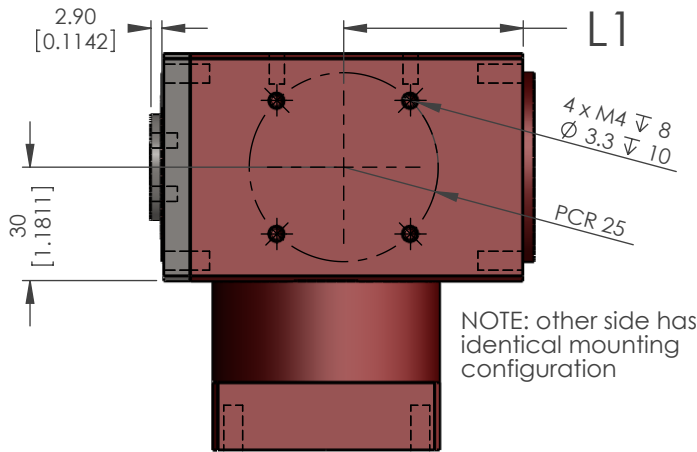


Model	L1	L2
RLFS-060-00 <input type="checkbox"/>	38	76
RAFS-060-00 <input type="checkbox"/>	47.5	95

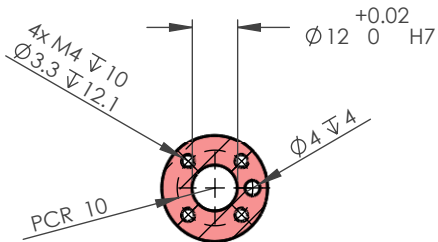
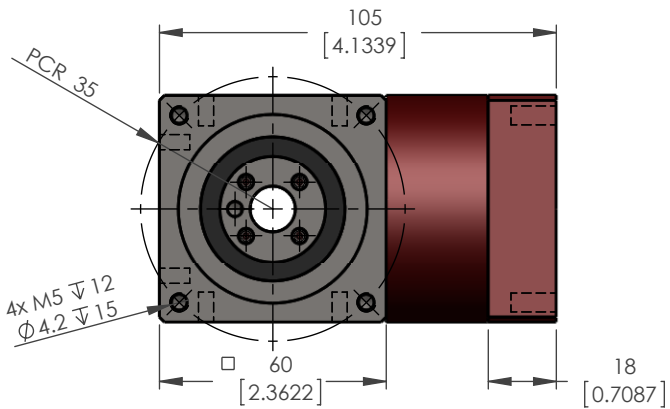
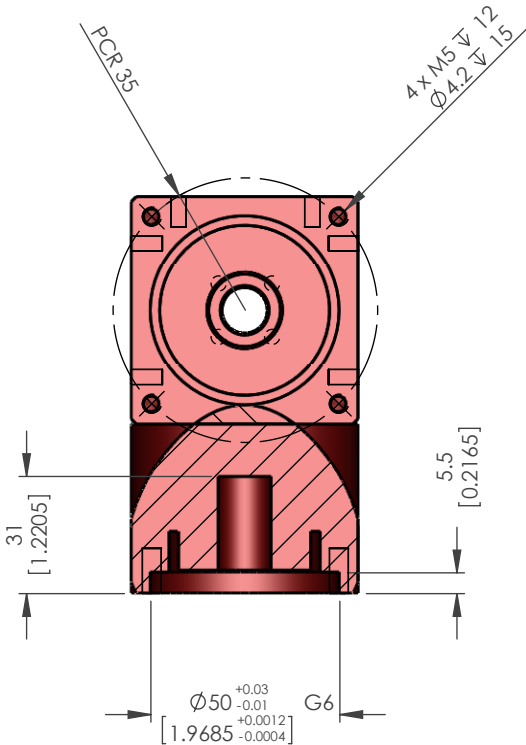
Note: RAFS-060-00 ☐ model shown



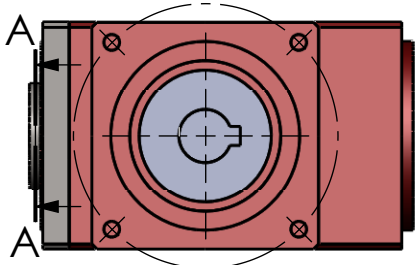
SCALE 1:4



NOTE: other side has identical mounting configuration



A-A (1 : 2)



Various input options available for most common motors

Unless otherwise specified, tolerance to be: CNS 4018 IT 14 Linear measures  
0.5-3 ±0.1  
3-6 ±0.1  
6-30 ±0.2  
30-120 ±0.3  
120-315 ±0.5

PROPRIETARY AND CONFIDENTIAL  
THE INFORMATION CONTAINED IN THIS DRAWING IS THE SOLE PROPERTY OF MYOSTAT MOTION CONTROL INC.  
ANY REPRODUCTION IN PART OR AS A WHOLE WITHOUT THE WRITTEN PERMISSION OF COOLMUSCLE INC. IS PROHIBITED.



Myostat Motion Control Inc.  
+1 905-836-4441  
www.myostat.ca

UNITS: mm [inch]

NAME	DATE	DO NOT SCALE DRAWING	DIMENSIONS ARE METRIC
DRAWN	M. Dank	16-May-2012	TITLE:
CHECKED			R-Series Gearbox
ENG APPR.			
SIZE	PRT. NO.	REV	
B	R <input type="checkbox"/> FS-060-00 <input type="checkbox"/>	3.0	
SCALE: 1:2	WEIGHT: -	SHEET 1 OF 1	