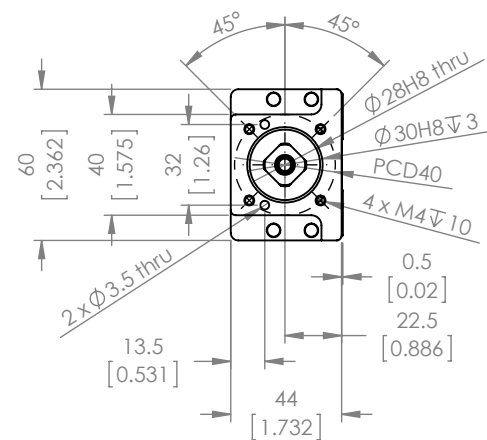
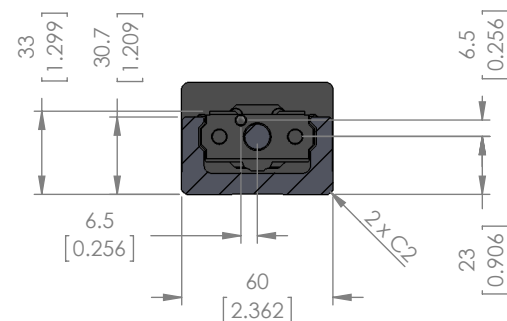
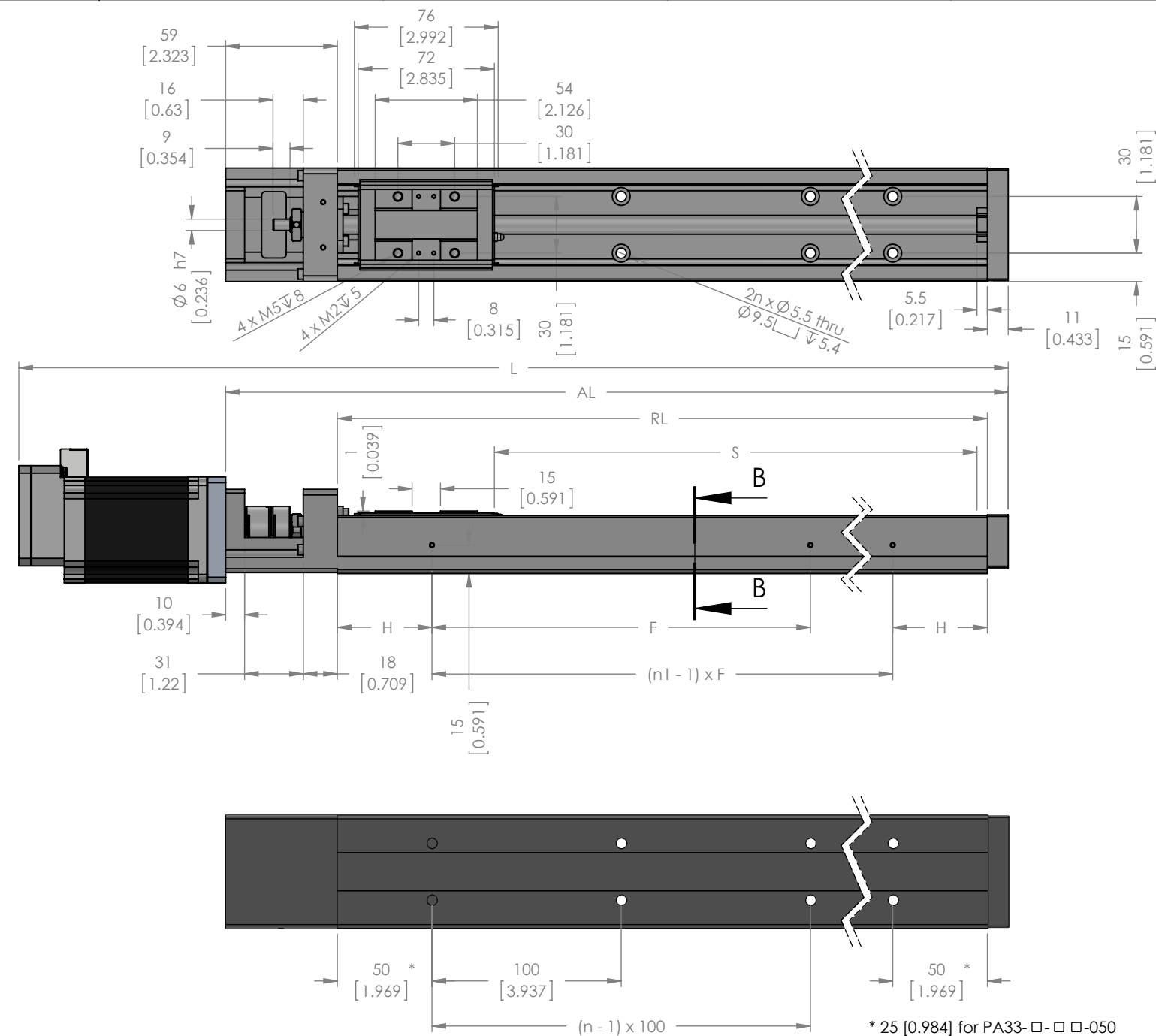
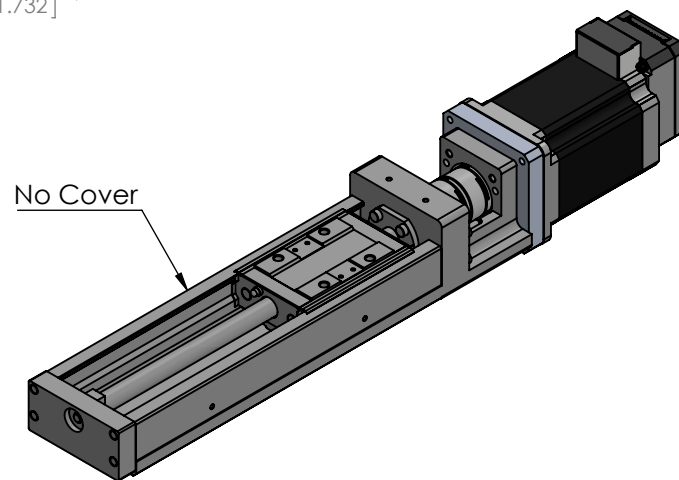



Technical Data			
	Unit	Value	
Ball Screw Lead	mm	6	10
Max. Velocity	mm/s	See Sheet 3	
Force*	N	1308 (w/ 23L20) 1257 (w/ 56B20)	785 (w/ 23L20) 754 (w/ 56B20)
		Standard	P Grade
Repeatability	mm	±0.01	±0.003
Positioning Accuracy		No standard defined	50 - 300 Stroke: 0.02 400 - 500 Stroke: 0.025 600 Stroke: 0.03
Running Parallelism			50 - 300 Stroke: 0.01 400 - 600 Stroke: 0.015
Backlash			0.02
Starting Torque		N/cm	7
* Peak torque values used in calculation of force			



Bill of Materials			
Part No.		Description	Quantity
KR33		Actuator	1
23S30C / 23L20C	56B10C / 56B20C	Motor	1
KR33-BKT-NEMA23		Bracket	1
RCLA25C-6-6.35	RCLA25C-6-8	Coupling	1
M4-12mm		Screws	8



Variable dimensions on Sheet 3

	NAME	DATE	DO NOT SCALE DRAWING		DIMENSIONS ARE METRIC		
DRAWN	E.Lockhart	30-Mar-2015	TITLE: PA-Series Integrated Actuators				
CHECKED							
ENG APPR.							
<div><p>Myostat Motion Control Inc. 1 + 905-836-4441 www.myostat.ca</p></div>			SIZE			PRT. NO.	REV
			B			PA33-□-□-□-□-□-□-□-□-□-□-□-□	1.1
			SCALE: 1:3		WEIGHT: -		SHEET 2 OF 3

PROPRIETARY AND CONFIDENTIAL
THE INFORMATION CONTAINED IN THIS
DRAWING IS THE SOLE PROPERTY OF
MYOSTAT MOTION CONTROL INC.
ANY REPRODUCTION IN PART OR AS A
WHOLE WITHOUT THE WRITTEN PERMISSION
OF COOLMUSCLE INC. IS PROHIBITED.



Myostat Motion Control Inc.
1+ 905-836-4441
www.myostat.ca

