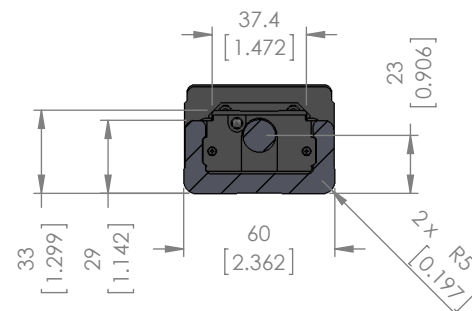
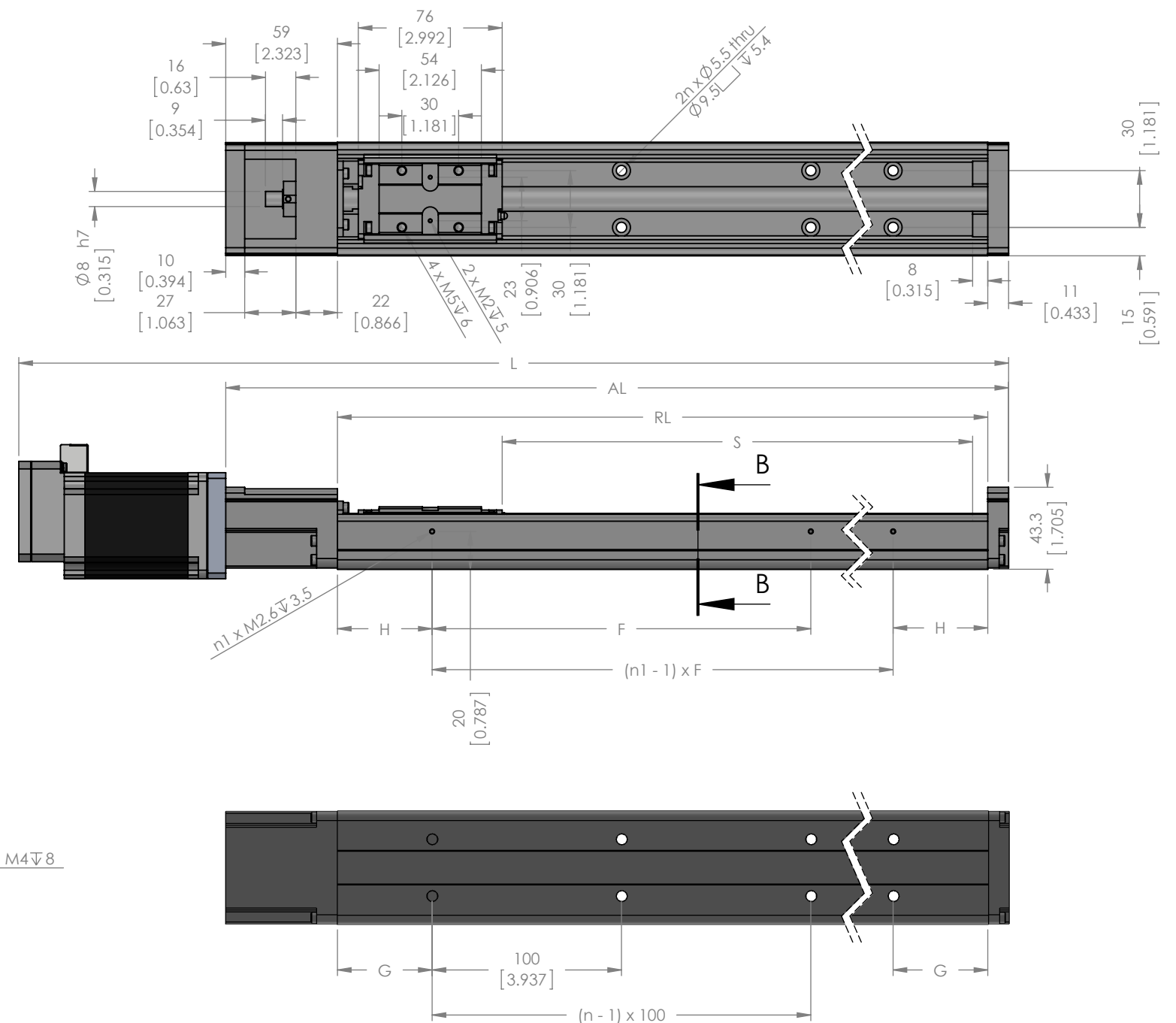
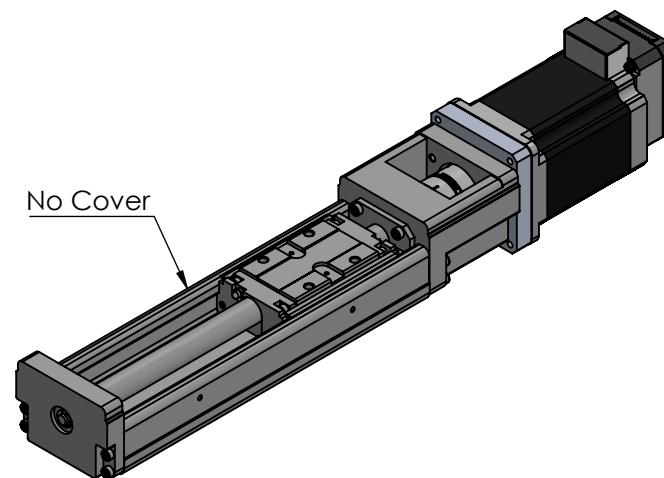
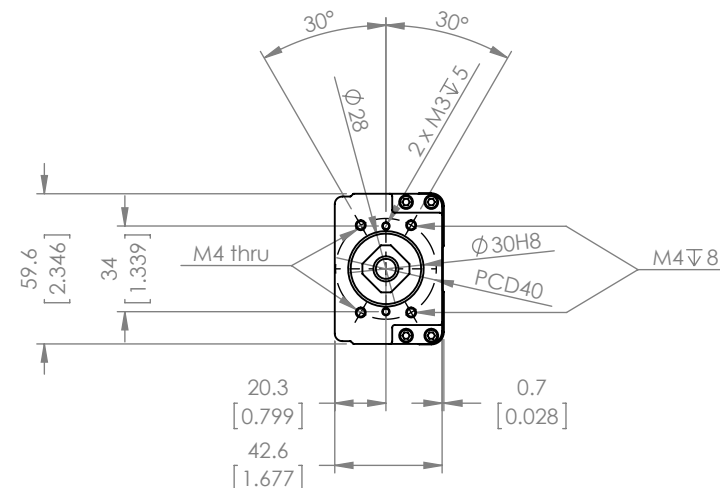




Technical Data				
	Unit	Value		
Ball Screw Lead	mm	6	10	20
Max. Velocity	mm/s	See Sheet 3		
Force	N	1308 (w/ 23L20) 1257 (w/ 56B20)	785 (w/ 23L20) 754 (w/ 56B20)	389 (w/ 23L20) 377 (w/ 56B20)
		Standard		P Grade
Repeatability	mm	±0.01		±0.003
Positioning Accuracy		No standard defined		45 - 295 Stroke: 0.02 395 - 495 Stroke: 0.025 595 Stroke: 0.03
Running Parallelism				45 - 295 Stroke: 0.01 395 - 495 Stroke: 0.015 595 Stroke: 0.02
Backlash		0.02		0.003
Starting Torque	N/cm	7		15



SECTION B-B

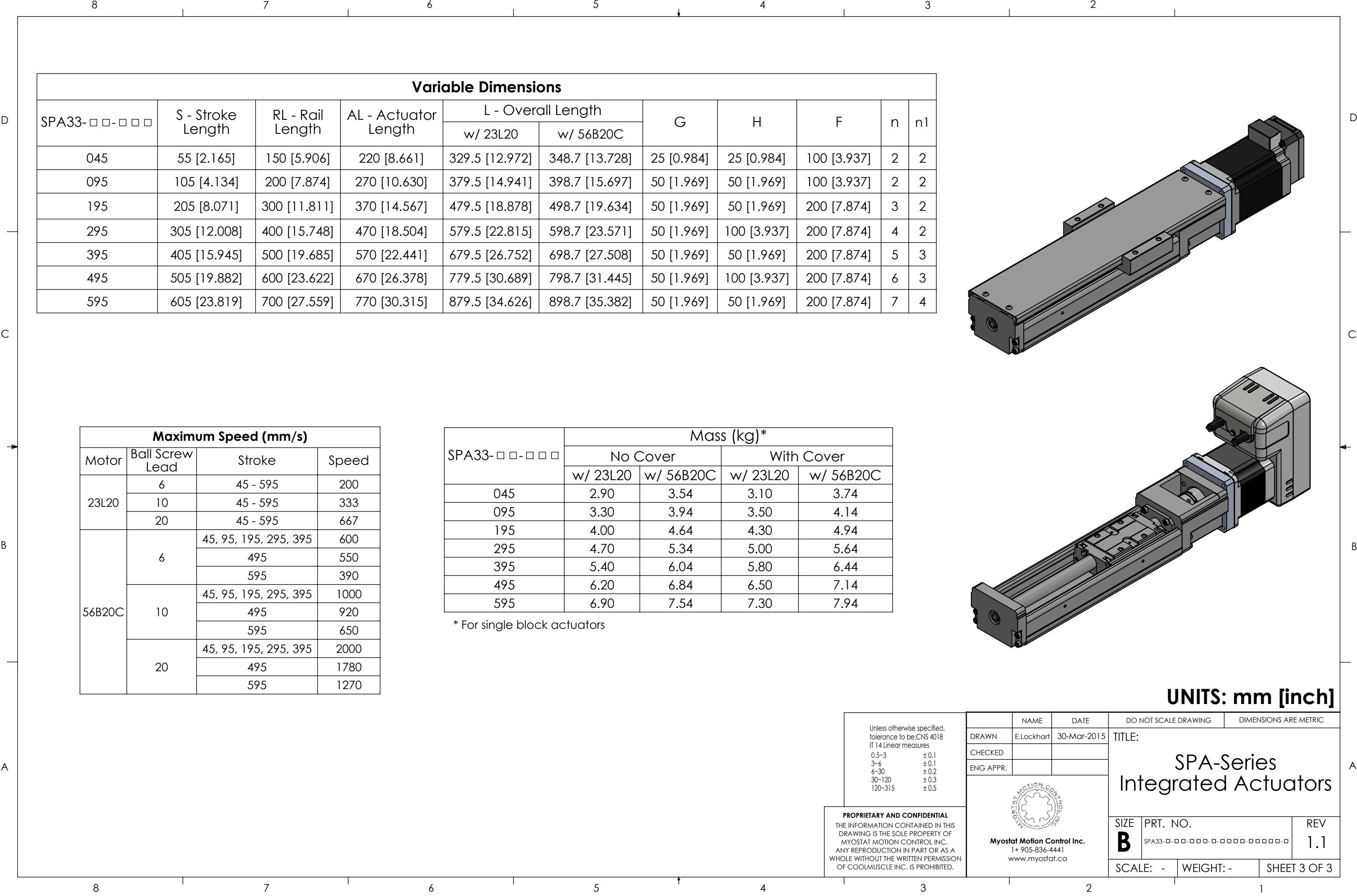


Bill of Materials			
Part No.		Description	Quantity
SKR33		Actuator	1
23S30C / 23L20C	56B10C / 56B20C	Motor	1
KR33-BKT-NEMA23		Bracket	1
RCLA25C-8-0.25	RCLA25C-8-8	Coupling	1
M4-12mm		Screws	6
M4-10mm		Screws	2

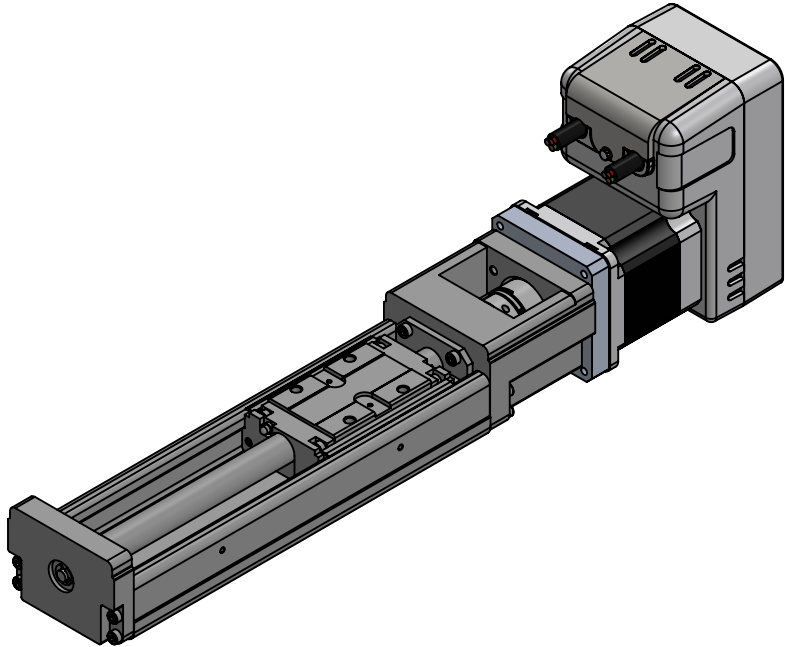
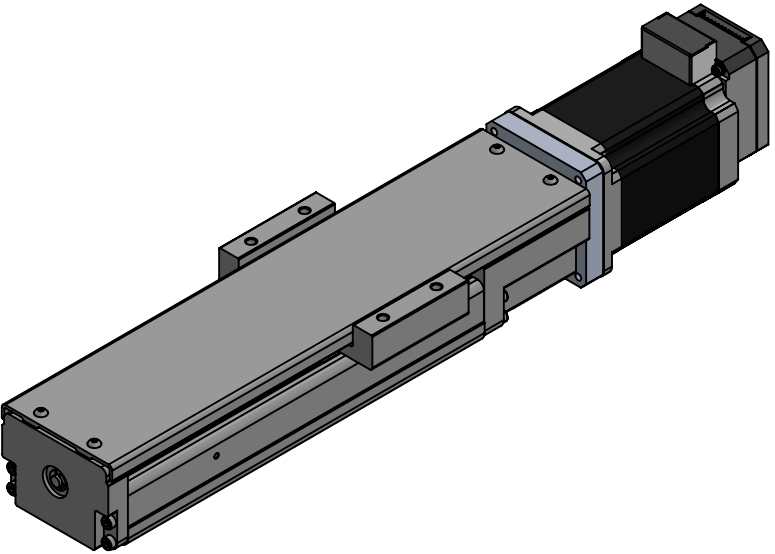
### Variable dimensions on Sheet 3

**UNITS: mm [inch]**

[illegible]



Variable Dimensions										
SPA33-□□-□□□	S - Stroke Length	RL - Rail Length	AL - Actuator Length	L - Overall Length		G	H	F	n	n1
				w/ 23L20	w/ 56B20C					
045	55 [2.165]	150 [5.906]	220 [8.661]	329.5 [12.972]	348.7 [13.728]	25 [0.984]	25 [0.984]	100 [3.937]	2	2
095	105 [4.134]	200 [7.874]	270 [10.630]	379.5 [14.941]	398.7 [15.697]	50 [1.969]	50 [1.969]	100 [3.937]	2	2
195	205 [8.071]	300 [11.811]	370 [14.567]	479.5 [18.878]	498.7 [19.634]	50 [1.969]	50 [1.969]	200 [7.874]	3	2
295	305 [12.008]	400 [15.748]	470 [18.504]	579.5 [22.815]	598.7 [23.571]	50 [1.969]	100 [3.937]	200 [7.874]	4	2
395	405 [15.945]	500 [19.685]	570 [22.441]	679.5 [26.752]	698.7 [27.508]	50 [1.969]	50 [1.969]	200 [7.874]	5	3
495	505 [19.882]	600 [23.622]	670 [26.378]	779.5 [30.689]	798.7 [31.445]	50 [1.969]	100 [3.937]	200 [7.874]	6	3
595	605 [23.819]	700 [27.559]	770 [30.315]	879.5 [34.626]	898.7 [35.382]	50 [1.969]	50 [1.969]	200 [7.874]	7	4




Maximum Speed (mm/s)			
Motor	Ball Screw Lead	Stroke	Speed
23L20	6	45 - 595	200
	10	45 - 595	333
	20	45 - 595	667
56B20C	6	45, 95, 195, 295, 395	600
		495	550
		595	390
	10	45, 95, 195, 295, 395	1000
		495	920
		595	650
	20	45, 95, 195, 295, 395	2000
		495	1780
		595	1270

SPA33-□□-□□□	Mass (kg)*			
	No Cover		With Cover	
	w/ 23L20	w/ 56B20C	w/ 23L20	w/ 56B20C
045	2.90	3.54	3.10	3.74
095	3.30	3.94	3.50	4.14
195	4.00	4.64	4.30	4.94
295	4.70	5.34	5.00	5.64
395	5.40	6.04	5.80	6.44
495	6.20	6.84	6.50	7.14
595	6.90	7.54	7.30	7.94

\* For single block actuators

UNITS: mm [inch]

Unless otherwise specified, tolerance to be: CNS 4018 IT 14 Linear measures 0.5-3 ± 0.1 3-6 ± 0.1 6-30 ± 0.2 30-120 ± 0.3 120-315 ± 0.5		NAME	DATE	DO NOT SCALE DRAWING	DIMENSIONS ARE METRIC
DRAWN		E.Lockhart	30-Mar-2015	TITLE:  SPA-Series Integrated Actuators	
CHECKED					
ENG APPR.					
PROPRIETARY AND CONFIDENTIAL THE INFORMATION CONTAINED IN THIS DRAWING IS THE SOLE PROPERTY OF MYOSTAT MOTION CONTROL INC. ANY REPRODUCTION IN PART OR AS A WHOLE WITHOUT THE WRITTEN PERMISSION OF COOLMUSCLE INC. IS PROHIBITED.		 Myostat Motion Control Inc. 1+ 905-836-4441 www.myostat.ca		SIZE <b>B</b>	PRT. NO. SPA33-□-□□-□□□□-□□□□□□□□□□
				REV 1.1	
				SCALE: -	WEIGHT: -
				SHEET 3 OF 3	